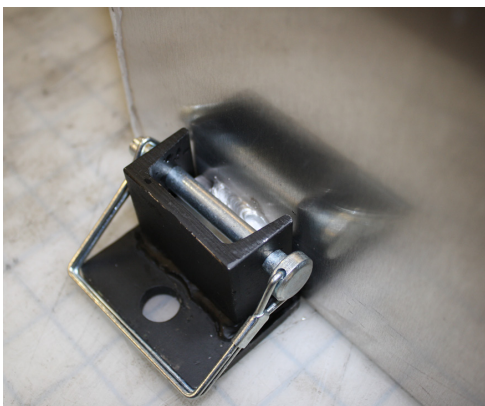


SCSR Mobile Cache Installation Instructions

Your mobile SCSR storage cache includes 4 mounting blocks. The blocks can be either welded or bolted to a piece of equipment. Locking hitch pins hold the cache in place. Larger caches have additional mounting locations. Use the locations that best match your machine.



1. Position the cache on the machine where it is least likely to be damaged while allowing easy access.
2. Remove hitch pins and place mounting blocks flush against the cache.
3. Mark location of blocks.
4. Weld or bolt mounting blocks to machine.
5. Place cache in mounting blocks.
6. Install hitch pins to hold cache in place. (Note: Pin does not pass through square tubing)



Hitch pin passes above square tubing.



304-855-7080